



## Windows 10/11 PowerTerm ver15.2 and TBE Installation and Configuration

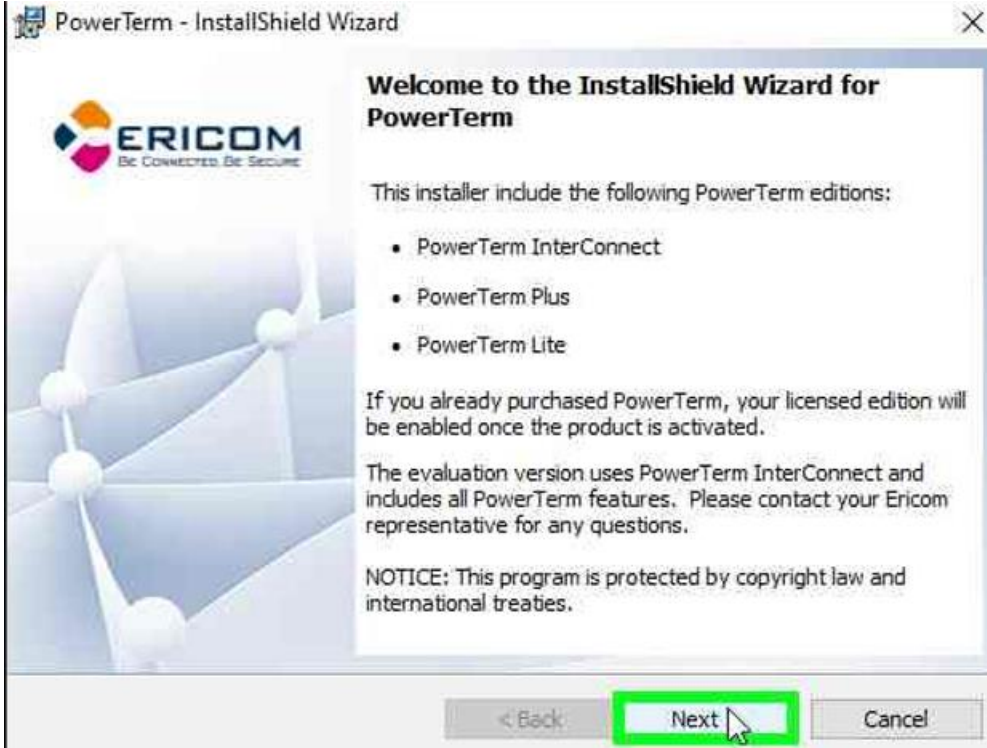
This guide is a full install of Ericom's PowerTerm version 15.2 on the Windows 10/11 and operating system for use on a Computer Insights, Inc. server. All files can be found on our website at [www.ci-inc.com/downloads](http://www.ci-inc.com/downloads), under the Text User Interface (TUI) section. If you're comfortable with installing and configuring PowerTerm, download the "PowerTerm for Windows 10/11 – Config Files" unpacker. This is a packed copy of the PowerTerm configurations from Computer Insights, Inc.

For typical installation and setup, see "Full Installation".

### Full Installation

Download PowerTerm 15.2 for Windows 10/11 software link found at [www.ci-inc.com/downloads](http://www.ci-inc.com/downloads). After the file downloads, find the saved file on your computer (filename is ptwd32e.exe) Right Click on the file and "Run as administrator".





Click "Next".





User left click on "I accept the terms in the license agreement (radio button) and Click Next"

PowerTerm - InstallShield Wizard

**User Information**

Please fill in all required fields

ERICOM  
Be Connected. Be Secure

Company:  \* Required

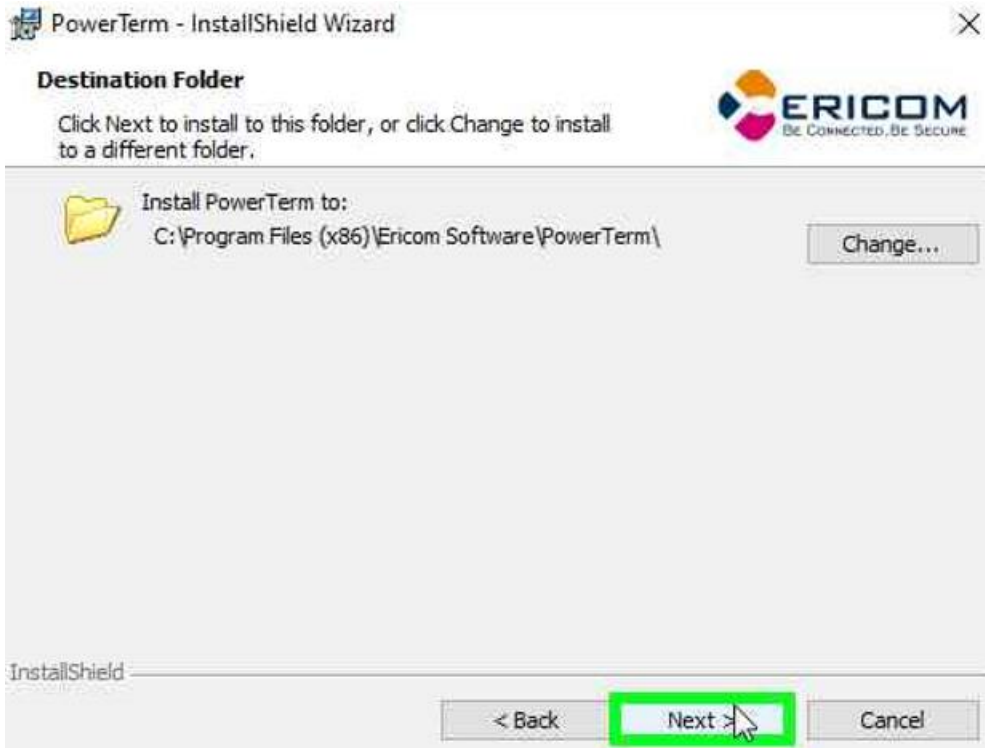
User Name:

Serial Number:  \* Required

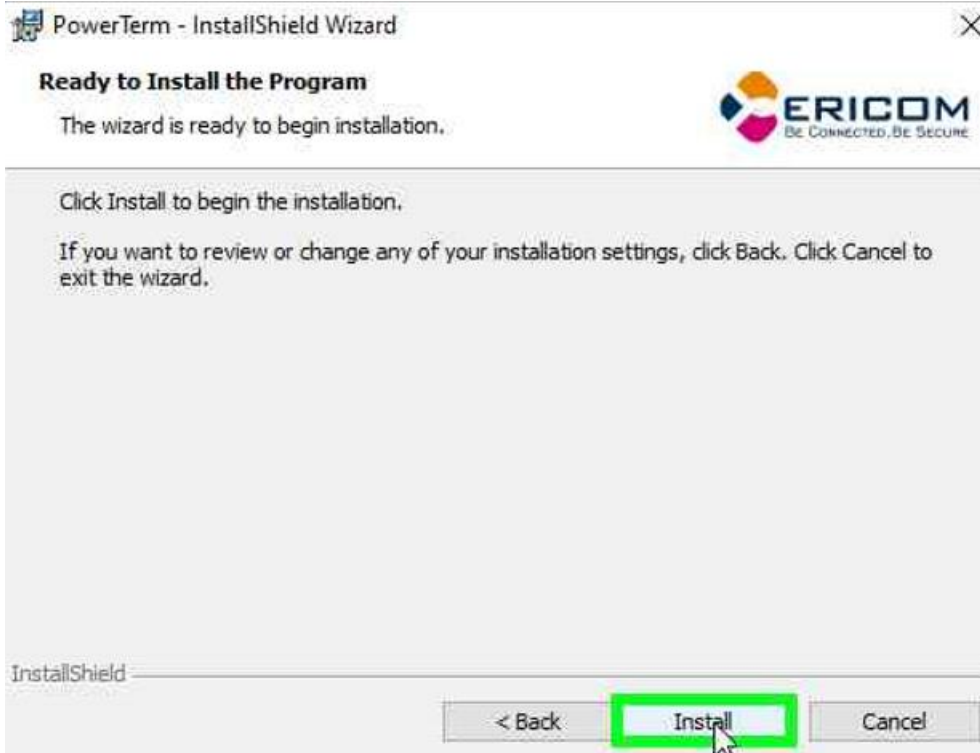
InstallShield

< Back   Next >   Cancel

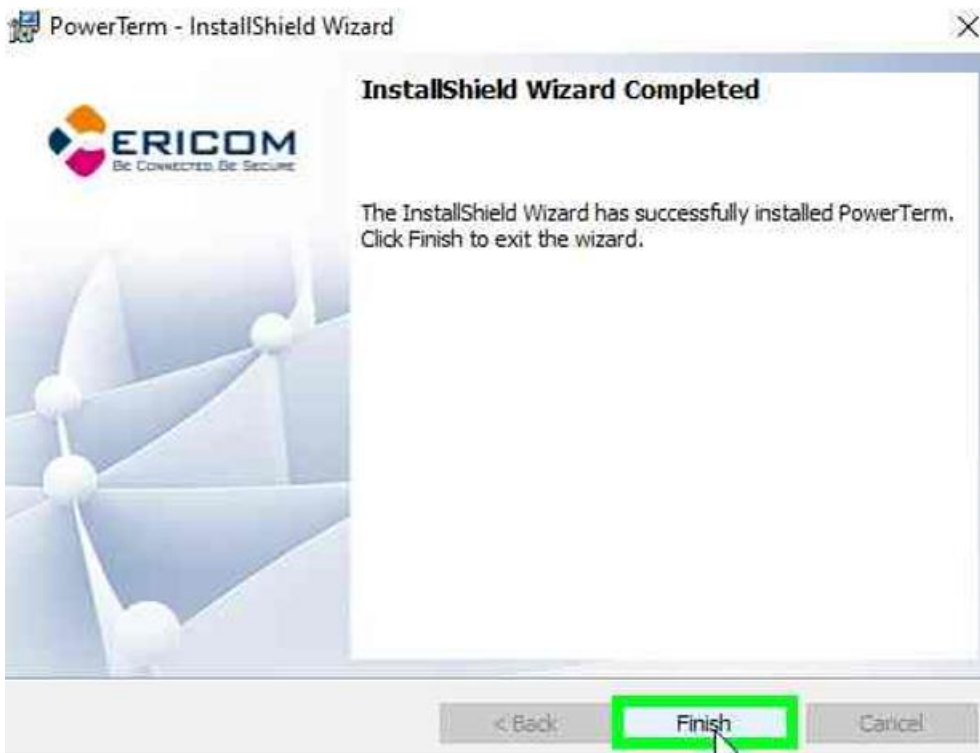
User keyboard input on "Company: (edit) and Click Next"



Choose default install to folder and Click “Next”



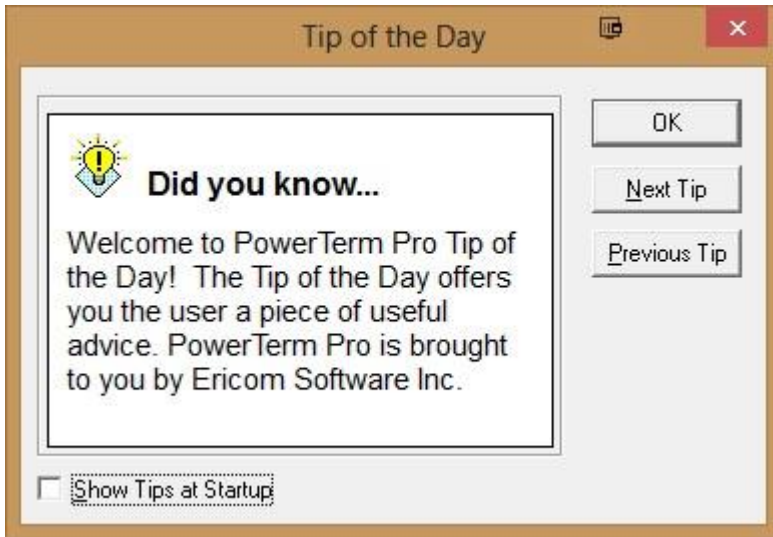
User left click on "Install (button)"







User left click on "Finish (button)"

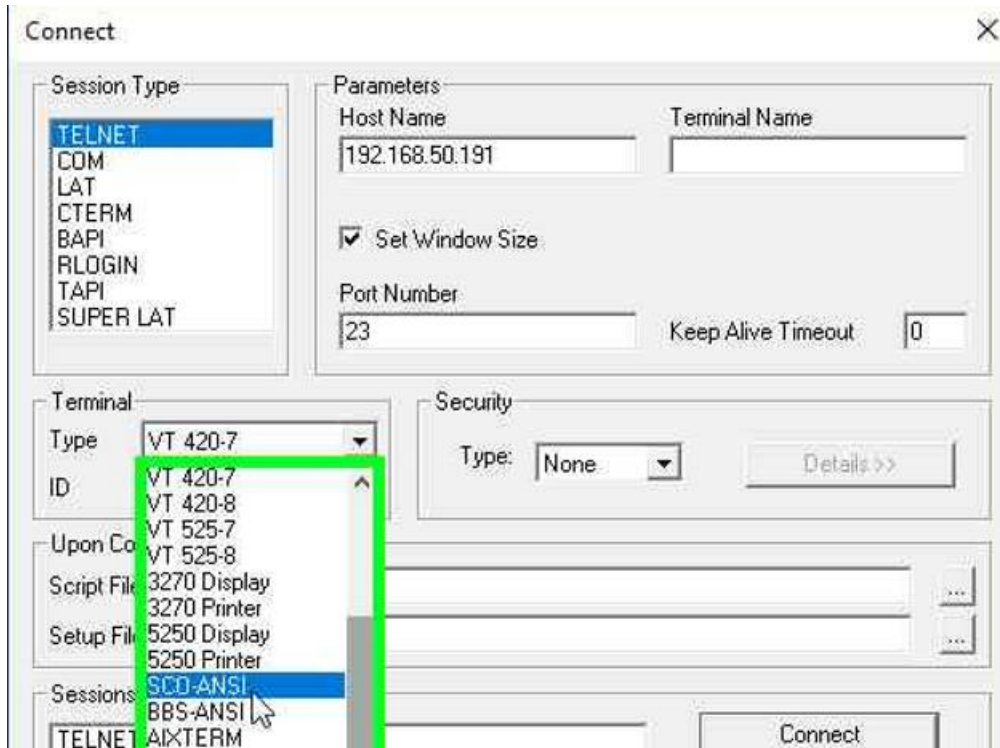


You can uncheck Show Tips at Startup and select "OK"



## Configuration

When you first run PowerTerm it will ask you to setup the emulator program for first use. Settings can be altered at anytime. Make sure you save when you're done.



Select "ANSI" followed by "SCO ANSI" in the Emulation Type on the left.



Session Type

- TELNET
- COM
- LAT
- CTERM
- BAPI
- RLOGIN
- TAPI
- SUPER LAT

Parameters

Host Name: 192.168.50.191

Terminal Name:

Set Window Size

Port Number: 23

Keep Alive Timeout: 0

Terminal

Type: SCO-ANSI

ID: ANSI

Security

Type: None

Details >>

Upon Connection Run

Script File:

Setup File:

Sessions List

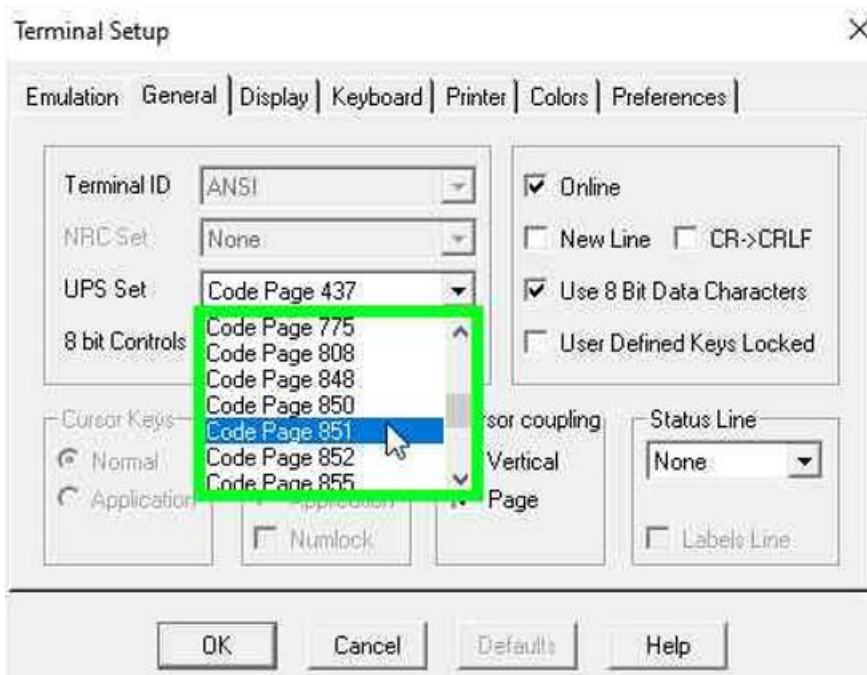
TELNET (192.168.50.191)	Connect
	Save As...
	Rename
	Modify
	Delete

Consult your administrator for the Host Name Field, which is the IP Address of your company's server. Save your default session by clicking on the New File Icon to the left of the red "X". Click "Apply" followed by "<<Setup".

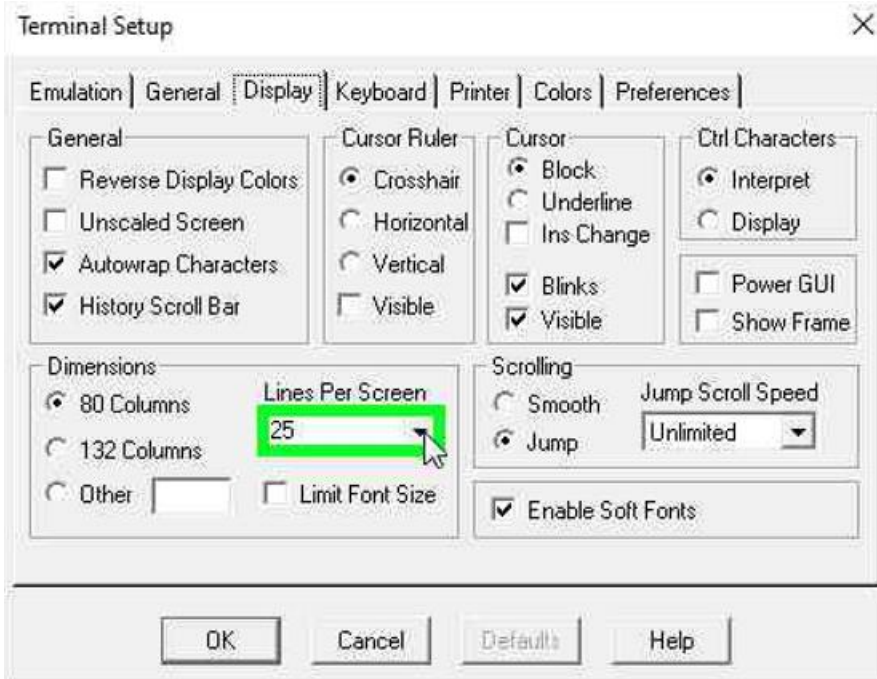




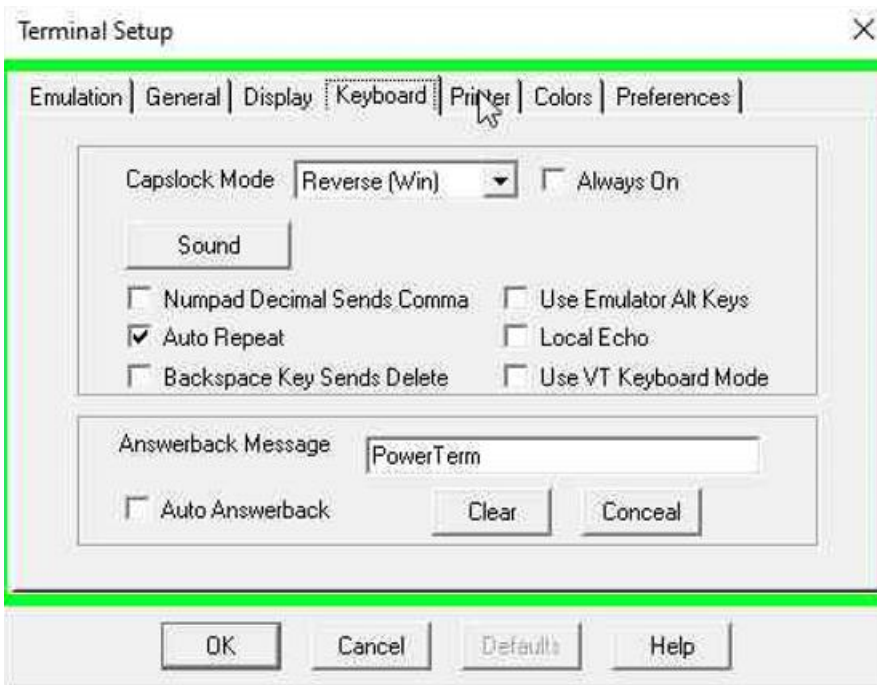
Verify that "SCO ANSI" is selected in the "ANSI terminals"



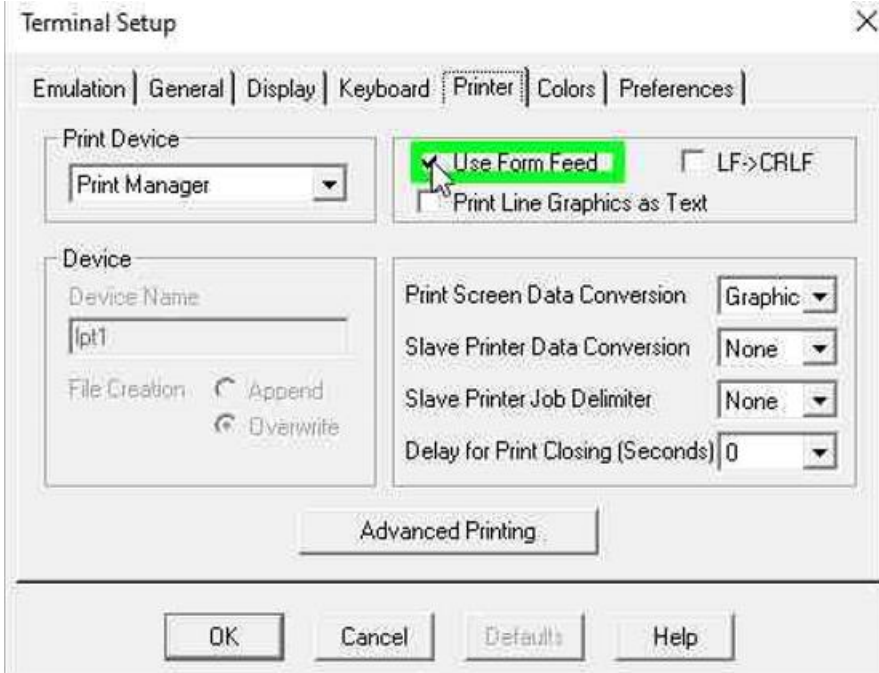
Following the Emulation Tab, at the top, is the General Tab. Change the UPS Set to "Code Page 851"



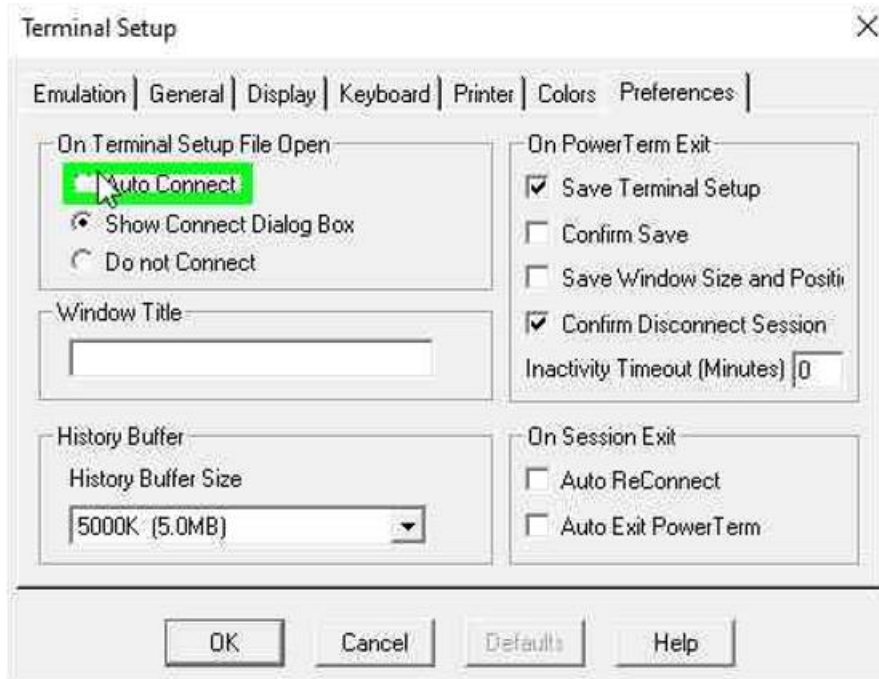
The Display tab should be configured according to these settings. Check for “Lines Per Screen” and “Enable Soft Fonts”



By default, the Keyboard tab shouldn't need changing.



By default, the Printer tab uncheck form feed.



In the preferences tab select “Auto Connect” a “5000k” History Buffer Size and “Save Window Size & Position”. If you have connection issues you should change the Inactivity Timeout to something other than 0.



Click “Apply” and then “Connect”.

```
(A) TELNET (192.168.50.191) - PowerTerm InterConnect Demo
File Edit Terminal Communication Sessions Options Script Help
Kernel 4.15.13-300.fc27.x86_64 on an x86_64 (22)
cinet8 login:
```

### IMPORTANT

You should see something similar to this. **At this point, you should “File >> Save”.** Leave the **default folder and Filename.** Click **“Save”**. This will save the configuration as the default emulator. Double-Clicking on the new PowerTerm Icon on your Desktop should auto-connect you to the Host you setup at the beginning of this example.





Custom Office Templates	3/5/2013 5:43 PM	File folder	
My PowerTerm	3/5/2013 9:16 PM	File folder	
ptdef.ptc	3/5/2013 8:55 PM	PTC File	1 KB
ptdef.ptk	3/5/2013 8:55 PM	PTK File	1 KB
ptdef.ptp	3/5/2013 8:55 PM	PTP File	2 KB
ptdef.ptr	3/5/2013 8:55 PM	PTR File	1 KB
ptdef	3/5/2013 8:55 PM	PTPro Document	10 KB
ptdef	3/5/2013 8:55 PM	PTX File	1 KB

The configuration files will be saved in your “My Documents” folder on your hard drive. Note: These files can be erased.

Note: The “My PowerTerm” folder stores your optionally configured settings and scripts. For more information, see below.

## Scripted Functions and Optional settings

### Scripted Functions

Certain actions are not native to the UNIX emulation environment and must be scripted in. We have prepared scripts for mouse functionality and the use of excel, among other things. You can enable this by downloading the scripts from our website at [www.ci-inc.com/downloads](http://www.ci-inc.com/downloads).

Text User Interface (TUI)	
PowerTerm for Windows 95	<a href="#">Download</a> <a href="#">View Documentation</a>
PowerTerm for Windows 98/2000/XP/Vista	<a href="#">Download</a> <a href="#">View Documentation</a>
PowerTerm for Windows 7	<a href="#">Download</a> <a href="#">View Documentation</a>
PowerTerm for Windows 7 – Config Files	<a href="#">Download</a>
PowerTerm Enterprise	<a href="#">Download</a> <a href="#">View Documentation</a>
PowerTerm InterConnect for Mac OS X*	<a href="#">Download</a> <a href="#">View Documentation</a>
PowerTerm Scripts	
tbe.psl	<a href="#">Download</a>
TBEm-on.psl	<a href="#">Download</a>
TBEm-off.psl	<a href="#">Download</a>
TBEScan.psl	<a href="#">Download</a>
tbe_script.rb – Mac Only**	<a href="#">Download</a>

\* Not officially supported by Computer Insights, Inc.

\*\*You can auto-mount a share by dragging the mounted volume to your “Login Items” in User Accounts in Preferences.



You will need the first 4 files here. (If your operating system is a mac you will need the file "tbe\_script.rb")

Note: Due to the file extensions types of these files you will need to right click and "Save Link As"

Place these in a folder on your desktop. Copy and paste all four files in the default "My PowerTerm" folder on your computer. Typically, the folder is found here.

C:\Users\

Certificates	3/5/2013 8:23 PM	File folder	
modems	7/19/2010 11:40 AM	Configuration sett...	25 KB
PTCOMM	3/5/2013 8:39 PM	Configuration sett...	1 KB
tbe.psl	3/5/2013 9:15 PM	PSL File	1 KB
TBEm-off.psl	3/5/2013 9:15 PM	PSL File	1 KB
TBEm-on.psl	3/5/2013 9:15 PM	PSL File	1 KB
TBEScan.psl	3/5/2013 9:15 PM	PSL File	1 KB

The folder should look like this when you're done.

## Excel

The excel functionality may still not work correctly without logging into the file server share through Windows. To do this, click the windows "Start" icon in the bottom left or press the start key on your keyboard. In the search bar type [\\<IPAddressOfHost>](#). This should prompt you to login to the server. You should use the username and password you would use to login to TBE.

If this doesn't fix excel functionality check with your system administrator or Computer Insights, Inc. There are a few flag inside of TBE to check located by F1 >> F3 >> F3 in "Enter and Edit User Flags – Powerterm Options". This menu should look the example where "sampleuser" would be the login of the person accessing the samba share



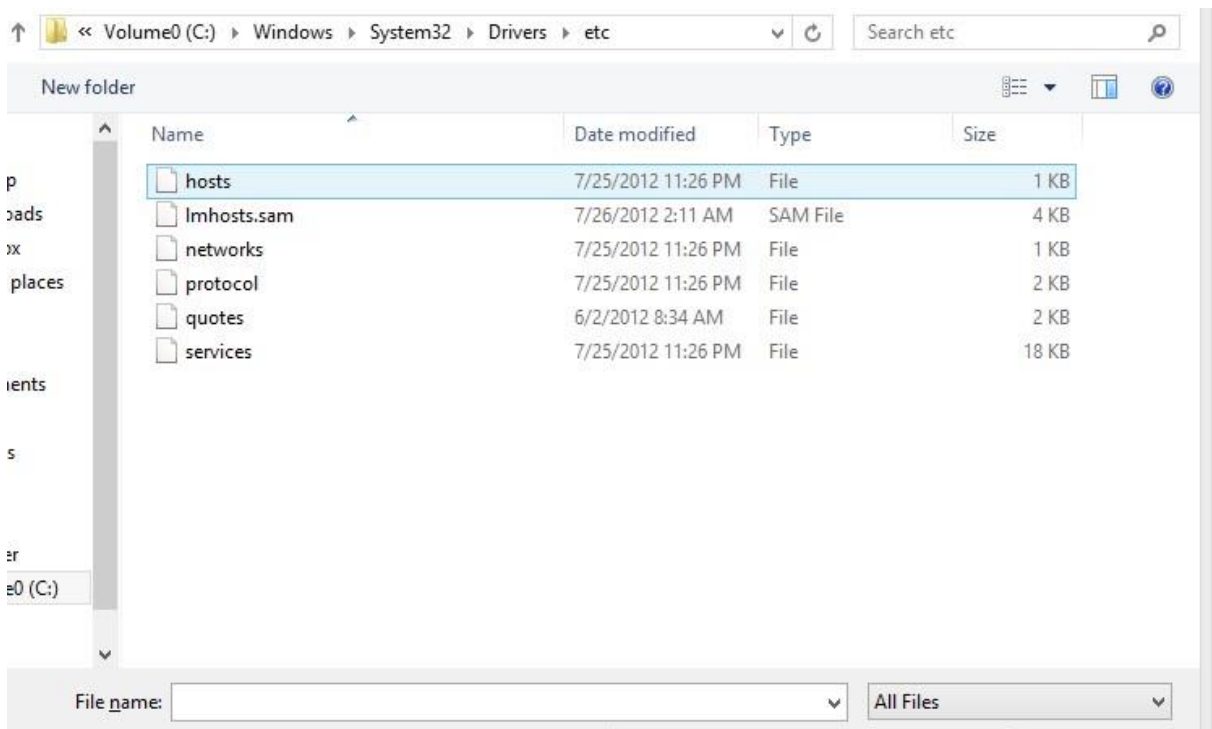


```
-----+-----
|ENTER & EDIT USER FLAGS - PowerTerm Options (ins)|
|-----+-----|
|Connect with PowerTerm? |Yes|
|Excel Linux Directory Path |/usr/users/sampleuser/|
|Excel Windows Directory Path |/sampleuser/|
|Map Delete Key to |Delete One Character|
|Grid Export Extension |Excel|
|-----+-----|
|Cancel Request | OK |
|-----+-----|
```

In some cases you may need to edit your hosts file and add the name of your server with the corresponding Ip Address. If the previous step did not work, edit your “hosts” file.

**\*\*Before attempting this consult your system administrator or Computer Insights, Inc. staff.**

Search for Notepad in the “Start Menu” via the windows search bar. Right-click and “Run as administrator”. Open the hosts file by clicking “File >> Open...” and browsing to the C:\Windows\System32\Drivers\etc directory. Select “All Files” in the pull-down menu at the bottom right. Select the hosts file and click “Open”.





```
hosts - Notepad
File Edit Format View Help
# Copyright (c) 1993-2009 Microsoft Corp.
#
# This is a sample HOSTS file used by Microsoft TCP/IP for Windows.
#
# This file contains the mappings of IP addresses to host names. Each
# entry should be kept on an individual line. The IP address should
# be placed in the first column followed by the corresponding host name.
# The IP address and the host name should be separated by at least one
# space.
#
# Additionally, comments (such as these) may be inserted on individual
# lines or following the machine name denoted by a '#' symbol.
#
# For example:
#
#       102.54.94.97       rhino.acme.com           # source server
#       38.25.63.10      x.acme.com             # x client host
#
# localhost name resolution is handled within DNS itself.
#       127.0.0.1        localhost
#       ::1              localhost
192.168.1.100           hostname
```

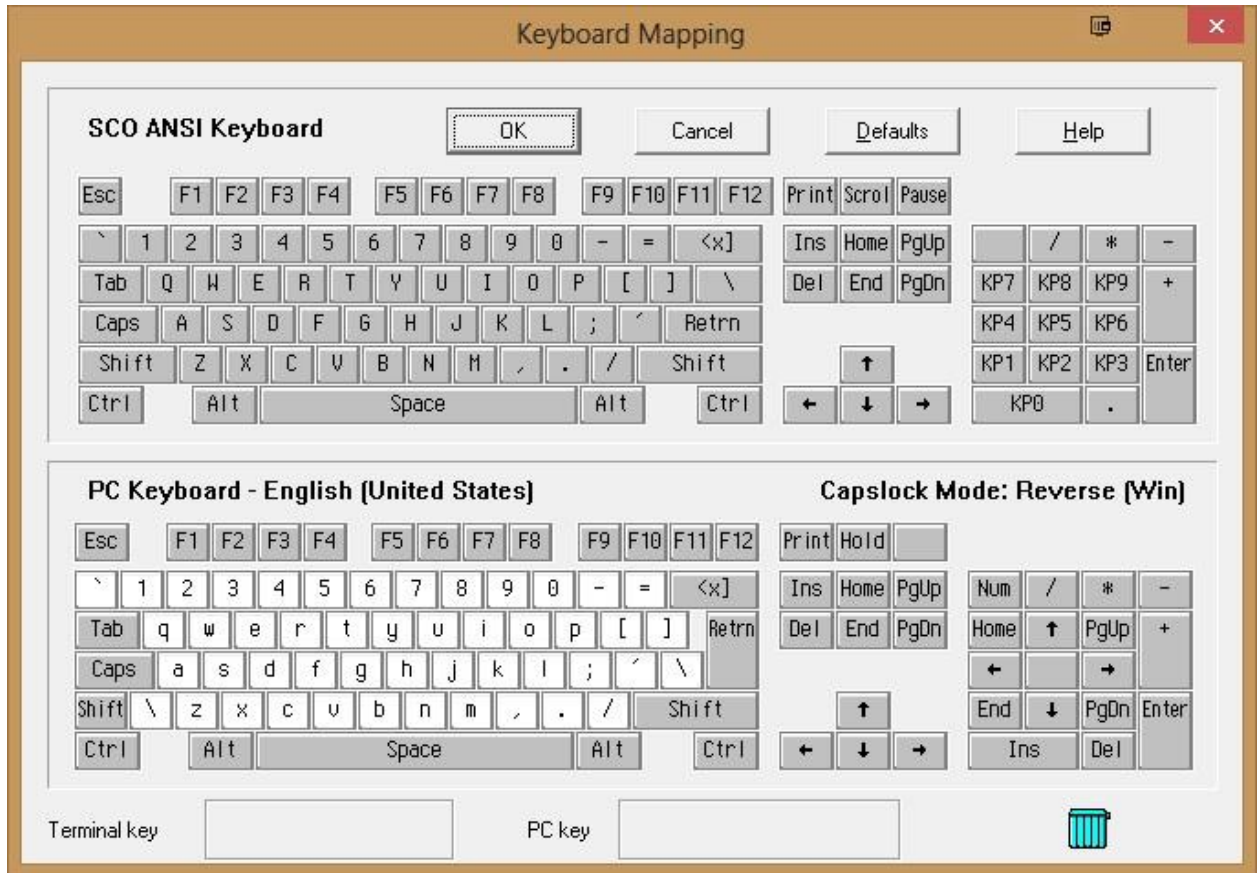
Your “Hostname” should be added to end of the list of hostnames with its corresponding ip address. Click “Save” before closing. The file type should remain null. The hosts file does not have a file extension.

\*\*\*Consult your system administrator or Computer Insights, Inc. staff if you have any difficulty\*\*\*

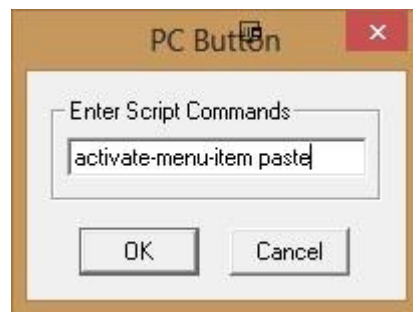
## Optional Settings

### Control-V and Paste

Optionally, you can map the control-V command for “paste”. By default, you cannot paste into PowerTerm.



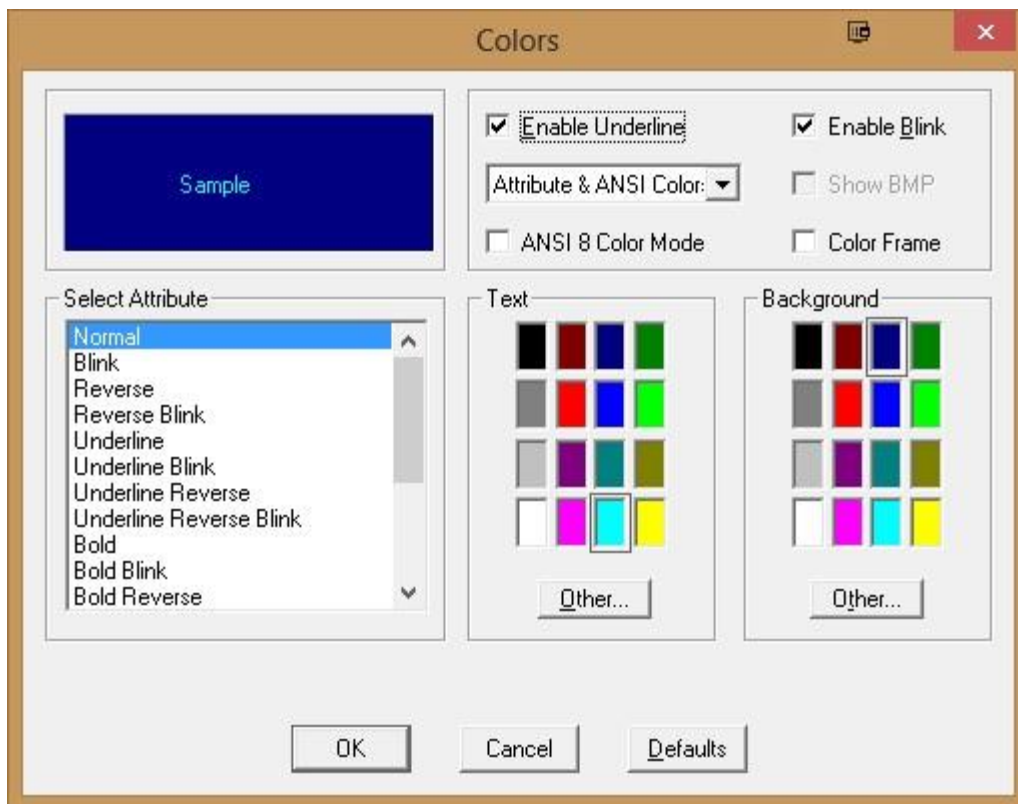
Options > Keyboard Map.. Will allow you to map any command to any key(s). Using the PC Keyboard – English half of this screen first click “Ctrl” and then right click ^V. When the menu pops up select “Enter Script Commands..”.



Enter “activate-menu-item paste” into this field and click “OK”. Click “OK” again.

### ANSI Color

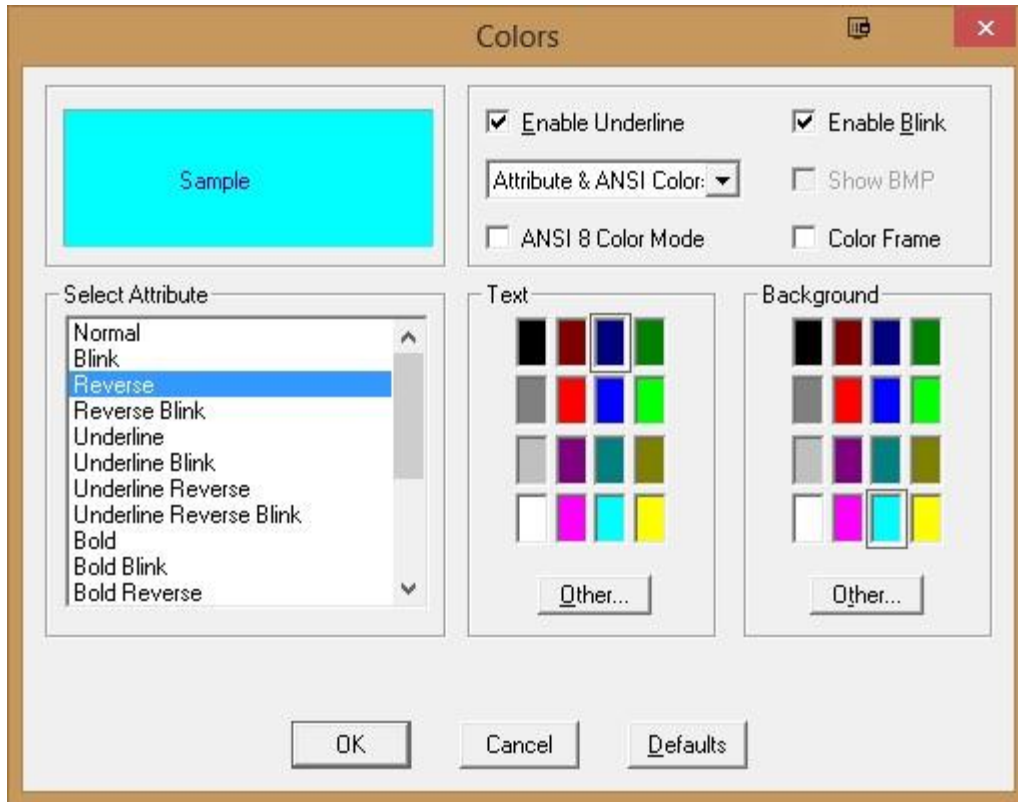
Color is also, by default, off in SCO ANSI emulation.



“Terminal” >> “Colors...” will bring you to this configuration menu.

Select “Attribute & ANSI Colors” in the dropdown. There are many different ways to configure the color. For this example we will only use two colors and two attributes.

Select the “Normal” attribute from the menu on the left. According to our Configuration, the Text will be Cyan and the Background will be Dark Blue.



Select the “Reverse” attribute from the menu on the left. In this case, we have it set to be the opposite of the normal colors.